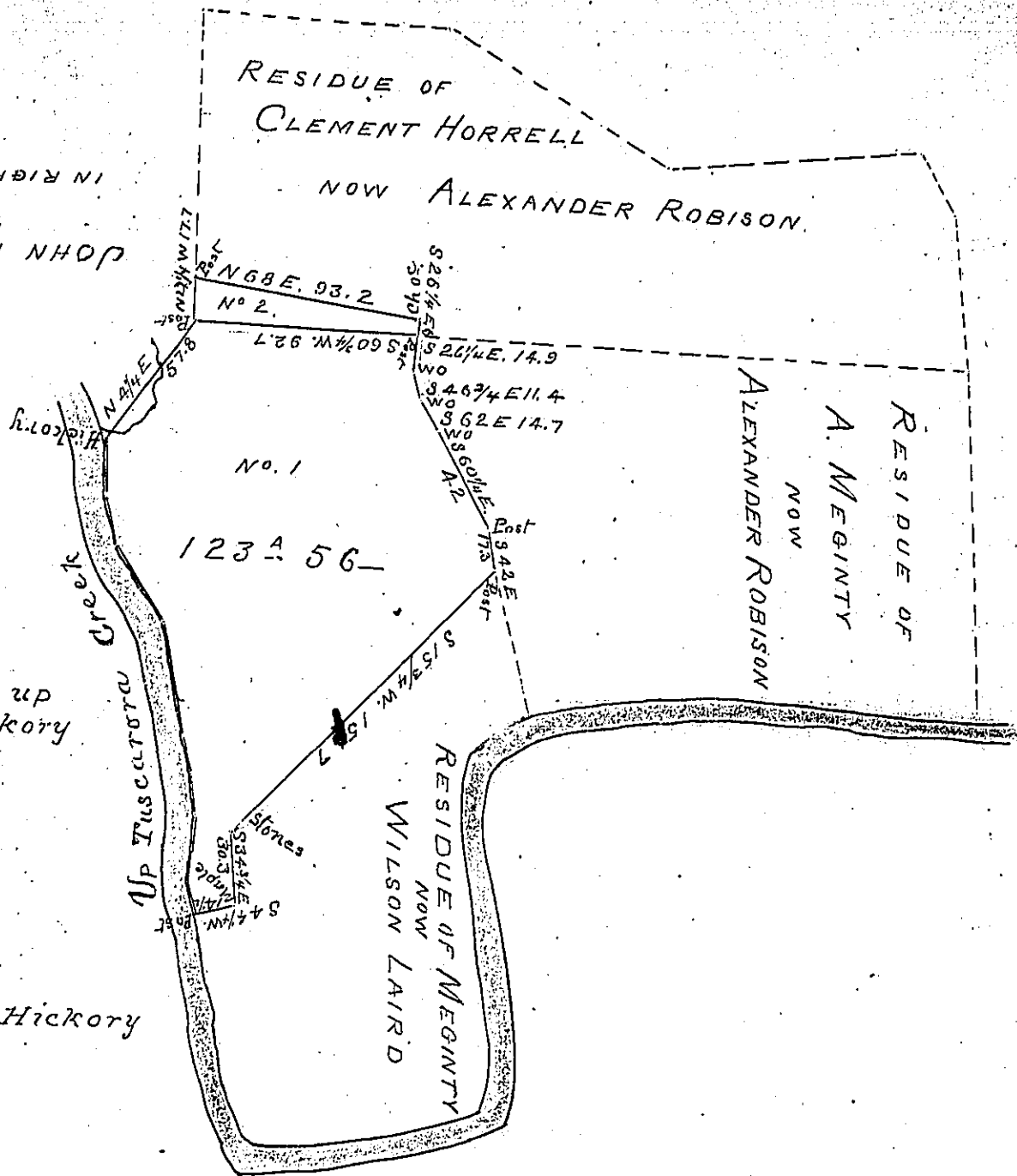


IN RIGHT OF BEALE  
JOHN PATTERSONS HEIRS



Courses and Distances up  
Creek from Post to Hickory

- N. 51 3/4 W. 12.
- N. 27 1/2 W. 12.
- N. 21 1/2 W. 16.
- N 39 W. 16.
- N 46 1/4 W. 15.
- N 40 1/4 W. 45.
- N 63 1/2 W. 35.
- N 72 3/4 W. 21.
- N 30 1/2 W. 22. to Hickory

Draught of a tract of Land situate in Milford Township Juniatta County composed of parts of two tracts No. 1. is part of a tract surveyed in pursuance of a Warrant granted to Alexander Meginty dated 3rd Feb<sup>r</sup> 1755 &c and contains one hundred and twenty three Acres and 56 perches and allowance. No. 2. is part of a tract surveyed 18<sup>th</sup> October 1770 in pursuance of an order granted to Clement Horrell dated 27<sup>th</sup> June 1768 &c the above part contains six Acres and 78 perches and allowance. Resurveyed the above parts May 1<sup>st</sup> 1840 at the request of Samuel Allen.

To Jacob Sallade Esqr  
Surveyor General  
Harrisburg Pa.

Per J. W. Allen J. D.

IN TESTIMONY that the above is a copy of the original remaining on file in the Department of Internal Affairs of Pennsylvania, made conformably to an Act of Assembly approved the 16th day of February, 1833, I have hereunto set my Hand and caused the Seal of said Department to be affixed at Harrisburg, this twelfth day of October 1903.

*James D. Brown*  
Secretary of Internal Affairs.